

Agmate®

TRACTOR LINKAGE PARTS



Dick Jones & Assoc., Inc.
PO Box 3835
Cleveland, TN 37320-3835
PHONE: 423-478-2253
FAX: 423-478-2283
sales@djonesa.com

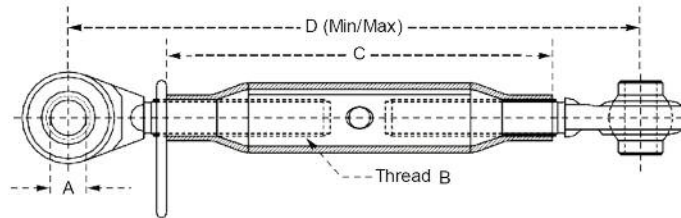
TABLE OF CONTENTS

Agmate®

Bushings - Lift Arm Reducer	T-9
Bushings -Quick Hitch Adapter	T-8
Clevis - Farm	T-33
Clevis - Purpose Clevis	T-34
Clevis - Straight	T-30
Clevis - Twisted	T-31
Clevis - Utility	T-32
Clevis Type Draw Pins	T-13
Clip Pins	T-24
Cylinder Pins	T-28
Cylinder Stroke Control Segments	T-35
Drawbar Grab Hook	T-34
Drawbars	T-10
Hitch Pins – Bent	T-23
Hitch Pins – Blue handle (grade 8)	T-21
Hitch Pins – Clevis Type	T-16
Hitch Pins – Fold over handle	T-18
Hitch Pins – Fold over handle w/chain	T-19
Hitch Pins – Forged Fixed handle	T-17
Hitch Pins – Red handle (grade 5)	T-20
Hitch Pins – Safety Lock	T-22
Lift Arm Ball Sockets	T-4
Lift Arm Ends and Parts	T-5
Lift Arm Pins	T-14
Lynch Pins	T-25
PTO Locking Pins	T-26
Ratchet jacks	T-29
Replacement Balls	T-7
Stabilizer Arms and Brackets	T-11
Stabilizer Pins	T-12
Top Link Assemblies	T-1
Top Link Ball Sockets	T-3
Top Link Ends	T-2
Top Link Pins	T-15
Top Link Reducer Bushings	T-8
Universal Clevis Pins	T-27
Weld on Ends	T-6

TOP LINK ASSEMBLY

Agmate®



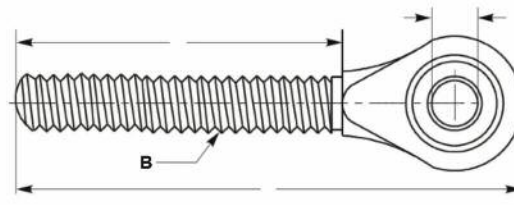
Quality forged top links available in Category 0, 1, 1 & 2 combination, 2 and 3 sizes.
Clear trivalent chromate plating.
The ends are clear zinc plated.

Agmate Part No.	Popular Code	Cat.	Pin Hole ØA (Inches)	Threads B (Inches)	Body Length C (Inches)	Closed Length-Min D (Inches)	Open Length-Max D (Inches)	Color	Weight (lbs.)
106072	TL197	0	5/8"	3/4" NC	9-1/2"	13"	18"	Plated	2.7
105582	TL199	0	5/8"	3/4" NC	7-5/8"	11"	16"	Plated	2.5
105556	TL1630	1	3/4"	1-1/8" NC	13-1/4"	17"	26"	Plated	7.4
105553	TL165	1	3/4"	1-1/8" NC	16"	21"	31"	Plated	7.6
106033	TL166	1	3/4"	1-1/8" NC	20"	25"	35"	Plated	9.1
106035	TL167	1 & 2	3/4" & 1"	1-1/8" NC	16"	21"	32"	Plated	9.1
	TL1672	1 & 2	3/4" & 1"	1-1/8" NC	20"	25"	35"	Plated	10.1
105554	TL174	2	1"	1-1/8" NC	16"	21"	31"	Plated	10
106036	TL176	2	1"	1-1/8" NC	20"	25"	37"	Plated	10
106097	TL1730	2	1"	1-1/4" NC	15-3/4"	20"	30"	Plated	10.7
106572	TL173	2	1"	1-1/4" NC	16"	23"	32"	Plated	13.4
106098	TL1735	2	1"	1-1/4" NC	20"	27"	37"	Plated	12.6
106039	TL187	3	1-1/4"	1-3/8" NC	19-1/2"	25-1/2"	37"	Black	20

Other Items May Be Available

TOP LINK ENDS

Agmate®



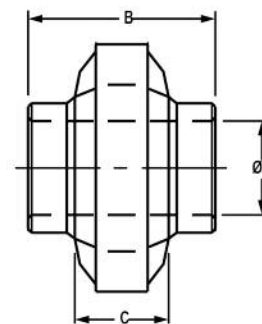
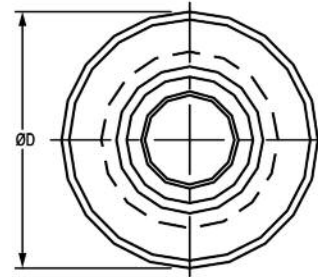
Forged and welded screw-in repair ends for Category 0, 1, 2 and 3 toplinks.
Clear trivalent chromate plating.

Agmate Part No.	Popular Code	Cat.	Type	Pin Hole $\varnothing A$ (Inches)	Thread $\varnothing B$ (Inches)	Thread Length C (Inches)	Overall Length D (Inches)	Weight (lbs.)
108267	RE1934	0	Forged	5/8"	3/4" NC (RH)	3-1/2"	6"	0.8
108268	RE1933	0	Forged	5/8"	3/4" NC (LH)	3-1/2"	6"	0.8
106059	RE1619	1	Forged	3/4"	1-1/8" NC (LH)	6"	8-3/4"	2.4
106060	RE1620	1	Forged	3/4"	1-1/8" NC (RH)	6"	8-3/4"	2.4
106040	RE1717	2	Forged	1"	1-1/4" NC (LH)	5-1/2"	10"	3
106049	RE1718	2	Forged	1"	1-1/4" NC (RH)	5-1/2"	10"	3
106058	RE1640	2	Forged	1"	1-1/8" NC (RH)	6-1/2"	11"	3
106057	RE1641	2	Forged	1"	1-1/8" NC (LH)	6-1/2"	11"	3
106095	RE1826	3	Forged	1-1/4"	1-3/8" NC (RH)	7-1/4"	12-1/8"	8
106109	RE1827	3	Forged	1-1/4"	1-3/8" NC (LH)	7-1/4"	12-1/8"	8
	RE113	0	Forged	3/4"	1" NC (LH)	5-1/2"	8"	1.8
	RE114	0	Forged	3/4"	1" NC (RH)	5-1/2"	8"	1.8

Other Items May Be Available

TOP LINK BALL SOCKETS

Agmate



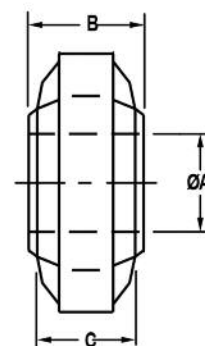
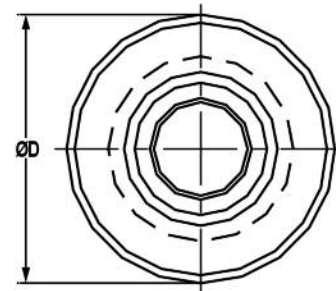
Weld-on top link ball sockets to fit Category 0 through Category 3 tractors.
Available in black oxide and clear trivalent chromate plating.

Agmate Part No.	Popular Code	Description	Cat.	Pin Hole ØA (Inches)	Length Thru Bore B (Inches)	Sleeve Width C (Inches)	Sleeve O.D. ØD (Inches)	Bulk Weight (lbs.)
106051	B213	Standard duty, black oxide	1	3/4"	1-5/8"	3/4"	2"	0.6
106113	B211	Standard duty, black oxide	2	1"	1-3/4"	7/8"	2-3/8"	0.8
108269	B2219	Heavy duty, black oxide	2	1"	1-3/4"	1-3/16"	2-3/4"	1.8
108270	B2229	Standard duty, black oxide	3	1-1/4"	1-3/4"	1-9/32"	3-1/8"	1.8
108271	B212	Heavy duty, black oxide	1	3/4"	1-5/8"	7/8"	2-1/8"	0.7
108272	B214	Standard duty, plated	2	1"	1-3/4"	7/8"	2-3/8"	0.8
108273	B215	Heavy duty, plated	1	3/4"	1-5/8"	7/8"	2-1/8"	0.7
108274	B216	Standard duty, plated	1	3/4"	1-5/8"	3/4"	2"	0.6
106573	B225	Extra heavy duty, black oxide	1	3/4"	1-3/8"	7/8"	2-3/8"	0.9
108275	B227	Standard duty, black oxide	2	1"	1-1/4"	7/8"	2-3/8"	0.8
106022	B228	Standard duty, plated	2	1"	1-1/4"	7/8"	2-3/8"	0.8
108276	B235	Standard duty, black oxide	1 & 2	3/4" & 1"	1-1/2" & 1-1/4"	7/8"	2-3/8"	0.6

Other Items May Be Available

LIFT ARM BALL SOCKETS

Agmate



Weld-on lift arm ball sockets to fit Category 0 through Category 3 tractors.
Available in clear trivalent chromate plating.

Agmate Part No.	Popular Code	Description	Cat.	Pin Hole ØA (Inches)	Length Thru Bore B (Inches)	Sleeve Width C (Inches)	Sleeve O.D. ØD (Inches)	Weight (lbs.)
108277	B2225	Standard duty, black oxide	0	5/8"	1"	3/4"	2"	0.6
106067	B221	Standard duty, black oxide	1	7/8"	1-3/8"	7/8"	2-3/8"	0.9
108278	B2215	Extra heavy duty, black oxide	2	1-1/8"	1-3/4"	1-3/8"	3-1/8"	1.9
108279	B2231	Standard duty, black oxide	3	1-7/16"	1-3/4"	1-11/32"	3-1/2"	2.4
108280	B222	Standard duty, plated	2	1-1/8"	1-5/16"	15/16"	2-3/8"	0.8
	B223	Standard duty, plated	1	7/8"	1-3/8"	7/8"	2-3/8"	0.9
106073	B224	Standard duty, plated	2	1-1/8"	1-5/16"	15/16"	2-3/8"	0.8
108281	B231	Heavy duty, black oxide	1 & 2	7/8" & 1-1/8"	1-3/4" both	1-3/16"	2-3/4"	1.4
	B232	Heavy duty, plated	1 & 2	7/8" & 1-1/8"	1-3/4" both	1-3/16"	2-3/4"	1.4
108283	B233	Extra heavy duty, black oxide	1 & 2	7/8" & 1-1/8"	1-3/4" both	1-3/8"	3-1/8"	1.7
	B2211	Heavy duty, plated	2	1-1/8"	1-3/4"	1-1/4"	2-3/4"	1.6
108186	B2216	Extra heavy duty, plated	2	1-1/8"	1-3/4"	1-3/8"	3-1/8"	1.9
	B2232	Standard duty, plated	3	1-7/16"	1-3/4"	1-11/32"	3-1/2"	2.4

Other Items May Be Available

LIFT ARMS AND PARTS




➤ Category 1 lift arms and leveling assembly.

Agmate Part No.	Reference Number	Popular Code	Description	Package Qty.	Weight (lbs.)
11918	87299729	LA335 ECON9N555BDS	Category 1 right- or left-hand forged lift arm; fits all Ferguson models, Ford 2N, 8N, 9N, NAA, Massey-Ferguson 35, 50, Oliver 550 and Oliver 3-point conversion, John Deere 1010; 7/8" pin holes; 31-3/4" ball centers; 34-1/2" overall length	1	11.7
106041	87299731	SL152 ECON577ABDS	Category 1 lift arm leveling assembly; 18-1/2" closed; 25" open length; 7/8" NF thread diameter; replaces Ford NCA577A; left hand repair end no. RE158; right hand repair end no. Re159	1	6.0

WELD ON ENDS (FORGED)

Agmate®



Toplink End

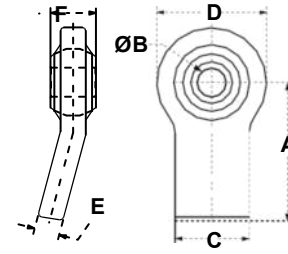
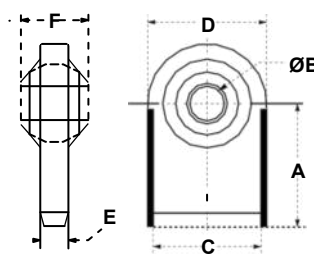
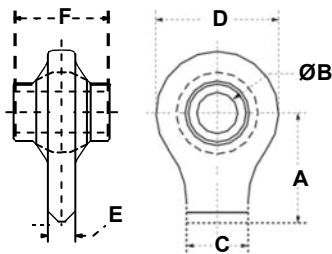


Straight



Bent

Lift Arm End



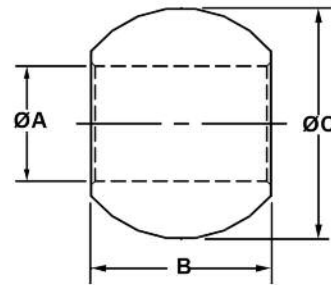
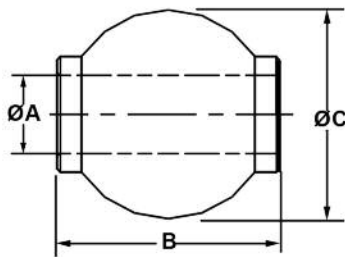
High quality, weld-on top link and lift arm ball sockets in Category 1, 2 and 3 sizes. Lift arm ends are available in straight and bent styles.

Agmate Part No.	Popular Code	Cat.	Description	Dim A (Inches)	Dia ØB (Inches)	Dim C (Inches)	Dim D (Inches)	Dim E (Inches)	Dim F (Inches)	Weight (lbs.)
106051	RE1642	1	Top link end	2"	3/4"	1-1/8"	2-1/4"	1/2"	1-3/4"	0.9
106113	RE1643	2	Top link end	2-3/8"	1"	1-1/8"	2-5/8"	1/2"	2"	1.4
106102	LA3322	1	Lift arm end-straight	2-3/4"	7/8"	2-3/8"	2-5/8"	5/8"	1-3/8"	1.7
106080	LA3325	2	Lift arm end-straight	3-1/8"	1-1/8"	2-3/4"	3-1/8"	3/4"	1-3/4"	2.8
108284	LA3323	1	Lift arm end-bent	4"	7/8"	1-7/8"	2-5/8"	5/8"	1-3/8"	2.0
106103	LA3324	2	Lift arm end-bent	4"	1-1/8"	1-7/8"	3-1/8"	5/8"	1-3/4"	2.7
108285	LA3330	3	Lift arm end-straight	3-3/8"	1-7/16"	3"	3-1/2"	3/4"	1-3/4"	3.0
	LA3320	1	Right Hand Lift Arm Repair End	4-3/8"	7/8"	1-13/16"	2-5/8"	5/8"	1-3/8"	2.0
	LA3321	1	Left Hand Lift Arm Repair End	4-3/8"	7/8"	1-13/16"	2-5/8"	5/8"	1-3/8"	2.0

Other Items May Be Available

REPLACEMENT BALLS

Agmate



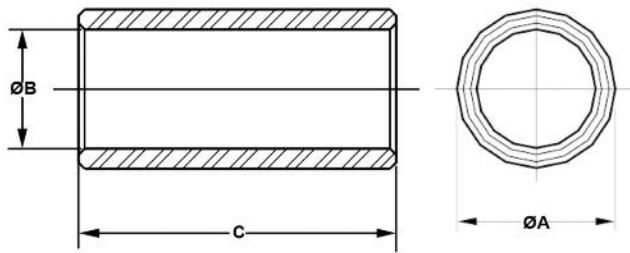
Top link and lift arm balls for Ford, John Deere, Oliver and other tractors.
Designed to replace original balls.
Clear trivalent chromate plating.

Agmate Part No.	Popular Code	Cat.	Description	Pin Hole ØA (Inches)	Length Thru Bore B (Inches)	Ball Dia ØC (Inches)	Weight (lbs.)
108286	B241	1	John Deere & Oliver top link ball; replaces Deere F2680, Oliver 105968A	3/4"	1-3/4"	2"	0.9
106023	B242	2	John Deere & Oliver top link ball; replaces Deere F2681, Oliver 104585A	1"	1-3/4"	2"	0.8
106024	B243	1	Ford lift arm ball; replaces Ford DDN995233; fits Ford 3000 and 4000	7/8"	1-3/8"	2-1/4"	1.1
106092	B244	2	Ford lift arm ball; replaces Ford C5NN557A; Fits Ford 5000	1-1/8"	1-3/4"	2-1/4"	1.1
106025	B245	1	Oliver lift arm ball; replaces Oliver 105967A; fits models with claw-type lift arm	7/8"	1-3/8"	2"	0.7
106026	B246	2	Oliver lift arm ball; replaces Oliver 104591A; fits all models with claw-type lift arm	1-1/8"	1-3/4"	2"	0.8
108287	B247	2	Ford lift arm ball; narrow width; replaces C5NN557B	1-1/8"	1-3/8"	2-1/4"	0.9
	--	2	Ford lift arm ball; heat treated, replaces C5NN557BDS	1-1/8"	1-3/8"	2-1/4"	0.9
	B248	1	Deere Leveling arm ball; replaces T21901	3/4"	1-3/8"	1-13/16"	0.6

Other Items May Be Available

TOPLINK REDUCER BUSHINGS

Agmate



Used in the pin hole of a toplink to allow a smaller Category pin to fit.
Clear trivalent chromate plating.

Agmate Part No.	Popular Code	Cat.	Description	Outside Dia ØA (Inches)	Inside Dia ØB (Inches)	Length C (Inches)	Bulk Weight (lbs.)
108288	B829	0-1	Fits all Category 0 toplink pins	3/4"	5/8"	1-5/8"	0.1
106101	B831	1-2	Fits all Category 1 toplink pins; replaces Ford C7NN6993A	1"	3/4"	1-15/16"	0.2
106609	B8220	1-2	Fits all Category 1 toplink pins; short	1"	3/4"	1-5/8"	0.2
106065	B833	2-3	Fits all Category 2 toplink pins	1-1/4"	1"	1-15/16"	0.2

QUICK HITCH ADAPTER BUSHINGS



Clear trivalent chromate plating.

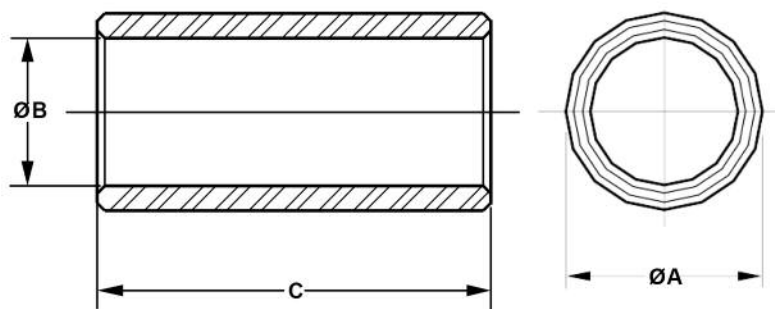
Agmate Part No.	Popular Code	Cat.	Description	Inside Dia (Inches)	Length (Inches)	Weight (lbs)
77869	HF141142	1	Adapter bushing for cat. 1 Quick Hitch	7/8"	4"	1.5
77870	HF141127	2	Adapter bushing for cat. 2 Quick Hitch	1-1/8"	4"	1

Other Items May Be Available

T-8

LIFT ARM REDUCER BUSHINGS

Agmate®

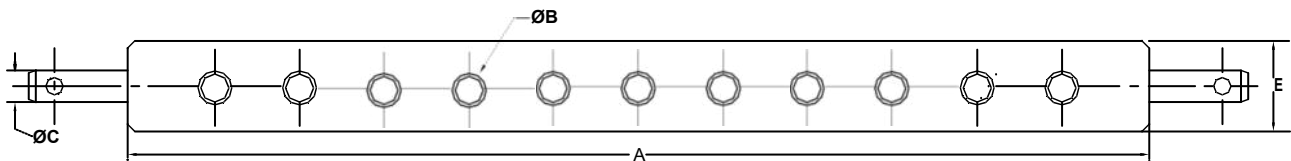


Used in the pin hole of a lift arm to allow a smaller Category pin to fit.
Clear trivalent chromate plating.

Agmate Part No.	Popular Code	Cat.	Description	Outside Dia ØA (Inches)	Inside Dia ØB (Inches)	Length C (Inches)	Bulk Weight (lbs.)
106610	B828	0-1	Fits all Category 0 lift arm pins	7/8"	5/8"	1-3/8"	0.1
106048	B821	1-2	Fits all Category 1 lift arm pins; Ford C7NN6992A	1-1/8"	7/8"	1-3/4"	0.2
108289	B8221	1-2	Fits all Category 1 lift arm pins; replaces John Deere F2684	1-1/8"	7/8"	1-3/8"	0.2
106066	B832	2-3	Fits all Category 2 lift arm pins	1-7/16"	1-1/8"	1-3/4"	0.3
108290	B8320	2-3	Fits all Category 2 lift arm pins; extra long	1-7/16"	1-1/8"	3-1/4"	0.5
105573	B8312	2-3	Fits all Category 2 lift arm pins; 15/32" lynch pin hole	1-7/16"	1-1/8"	2-1/2"	0.4
106611	B8319	2-3	Fits all Category 2 lift arm pins	1-7/16"	1-1/8"	2-3/4"	0.5
108291	14042 6	1	Adaptor Bushing for Cat1 Quick Hitch	–	7/8"	4"	1.5
108292	14044 4	1	Quick Hitch Adaptor Bushing Kit	–	7/8"	4"	3.0
108293	14027 7	2	Adaptor Bushing for Cat 2 Quick Hitch	–	1-1/8"	4"	1.0
108294	14030 7	2	Quick Hitch Adaptor bushing kit	–	1-1/8"	4"	2.2

Other Items May Be Available

DRAWBARS / SWINGING DRAWBAR



One-piece 3-point hitch cross drawbars to fit Category 0 through Category 3 tractors.

Agmate Part No.	Popular Code	Cat.	No. Of Holes	Lift Arm Spacing A (Inches)	Hole Dia ØB (Inches)	Pin Dia ØC (Inches)	Thickness D (Inches)	Width E (Inches)	Color	Weight (lbs.)	
32565	DB418	0	7	20"	5/8"	5/8"	5/8"	2"	Red	6.8	
32566	DB419	0/1	7	20"	3/4"	7/8"	1"	2-1/2"	Black	13.5	
28272	DB411	1	11	26"	3/4"	7/8"	1"	2-1/2"	Blue	16.4	
	B500236	1	11	26"	3/4"	7/8"	1"	2-1/2"	Black	16.4	
11963	DB421	2	11	26"	3/4"	1-1/8"	1-1/4"	3"	Blue	27	
	B500237	2	11	26"	3/4"	1-1/8"	1-1/4"	3"	Black	27	
	DB422	2	13	32"	3/4"	1-1/8"	1-1/4"	3"	Blue	33	
11968	DB4212	2	13	32"	3/4"	1-1/8"	1-1/4"	3"	Black	33	
11967	DB431	3	5	38"	1-1/4"	1-7/16"	1-3/4"	3-1/2"	Black	65	
108295	DB4130	1	Drawbar lock							Black	4
11965	SD921		Swinging drawbar, fits Ford 2N, 8N, 9N, NAA, 630, 631, 640, 641, 650, 651, 660 and 661, Ferguson TO20, TP030, Massey Ferguson 35 and 50, 30" overall length, 3/4" first hitch pin hole, 5/8" second hitch pin hole.						Black	16	



11965

Other Items May Be Available

STABILIZER ARMS AND BRACKETS

Agmate



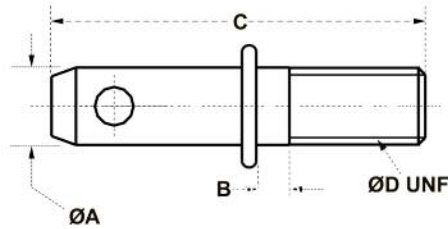
Replacement stabilizer arms for stabilizer kits and a variety of tractors. Stabilizer arms increase the stability of the tractor lift arms. Stay straps for Category 1 tractors are used to maintain an implement at a set height.

Agmate Part No.	Popular Code	Description	Weight (lbs.)
108296	D5511	Upper stay strap for Category 1; fits all Ferguson models, Ford 2N, 8N, 9N, NAA, 600, 700, 800, 900, Oliver 550 and all Oliver 3-point conversions, Massey-Ferguson 35 and 50	2.8
108297	D5512	Lower stay strap for Category 1; fits all Ferguson models, Ford 2N, 8N, 9N, NAA, 600, 700, 800, 900, Oliver 550 and all Oliver 3-point conversions, Massey-Ferguson 35 and 50	2.4
11999	SA621	Right or left universal stabilizer arm; 7/8" pin holes on 31-9/16" centers	6.0
12000	SA622	Right or left universal stabilizer arm; replaces Massey-Ferguson ST96362358; 7/8" pin holes on 33-1/8" centers	6.4
106055	SA6260	- adjustable forged stabilizer arm; fits all Ferguson models, Ford 2N, 8N, 9N, NAA, 600, Massey-Ferguson 35, 50, 175, 65, 135, 150, 165, 180; adjustable from 28-1/2" to 36"; 7/8" pin holes; 7/8" NF threads	6.0
108298	SA6251	Left stabilizer arm; fits Ford 2000 and 3000; 7/8" pin holes on 31-5/8" centers	6.0
108299	SA6252	Right stabilizer arm; fits Ford 2000 and 3000; 7/8" pin holes on 31-5/8" centers	6.0
108300	SA6256	Universal stabilizer arm; 7/8" pin holes on 31-9/16" and 33-1/8" centers; 3 hole	6.1
108301	SB631	Right or left universal stabilizer bracket; Ferguson and Ford stabilizer kits; accommodates 87299259 (251406FDS) stabilizer stub pin	3.0

Other Items May Be Available

STABILIZER PINS

Agmate



- Stabilizer stub pins for Ford, Ferguson and other stabilizer kits.
- Clear trivalent chromate plating.

Agmate Part No.	Popular Code	Description	Pin Dia OA (Inches)	Usable Length B (Inches)	Overall Length C (Inches)	Thread Dia OD (Inches)	Bulk Weight (lbs.)
106120	P781	Replaces Ford 230044, Massey-Ferguson 18177M1	7/8"	3/8"	2-5/8"	5/8" NF	0.39
108302	P785	Replaces Ford 141185, Massey-Ferguson MF668154M1	7/8"	1-1/4"	3-1/8"	5/8" NF	0.40
106612	P787	Stabilizer stub pin	7/8"	1/2"	2-5/8"	5/8" NF	0.30
108303	P788	Replaces MF186802M1	7/8"	11/16"	3-1/8"	3/4" NF	0.40
105580	P711		7/8"	1/2"	3-1/4"	7/8" NF	0.80

Other Items May Be Available

CLEVIS TYPE DRAW PINS

Agmate®

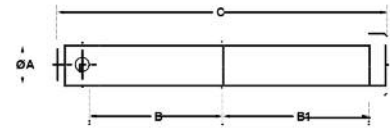
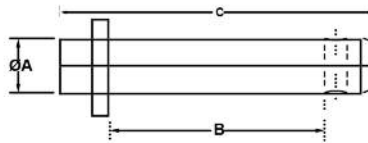
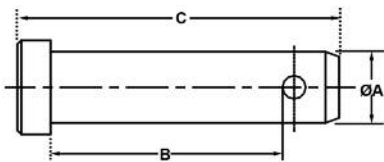
Head Type



Roll pin type



Categories 2 and 3



For use with implements with yoke type mountings.
All pins are clear trivalent chromate plating.

Agmate Part No.	Popular Code	Cat.	Type	Pin Dia ØA (Inches)	Usable Length B (Inches)	Overall length C (Inches)	Bulk Weight (lbs.)
105567	P7234	1	Roll Pin	7/8"	4-1/2"	6"	0.9
108304	P7235	2	Roll Pin	1-1/8"	3-5/16"	4-3/4"	1.2
106578	P7236	2	Roll Pin	1-1/8"	4-3/4"	6-1/2"	1.7
105584	P7237	2	Roll Pin	1-1/8"	5-3/8"	7"	1.9
105568	P7238	2	Roll Pin	1-1/8"	7-3/8"	9"	2.4
108184	P7239	2	Roll Pin	1-1/8"	9"	10-3/4"	2.9
108305	P7230	3	Head	1-7/16"	4-11/16"	6"	2.8
108306	P7710	3	Roll Pin	1-7/16"	3-3/8"	5-3/8"	2.3
106577	P7231	3	Roll Pin	1-7/16"	6-1/4"	8-1/2"	3.8
105576	P7250	2 & 3	Head	1-1/8" & 1-7/16"	3-5/8" & 4-1/4"	9-1/4"	3.4
105566		1 & 2		7/8" & 1-1/8"		8"	

Other Items May Be Available

LIFT ARM PINS




Adjustable

Forged Shoulder

Cat. 1 to 2

Cat. 1 & 2

Cat. 2 to 1

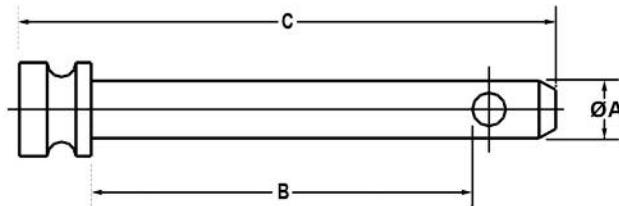
Forged and adjustable Category 0 through 3 draw pins for a variety of applications.
All pins are clear trivalent chromate plating.

Agmate Part No.	Popular Code	Cat.	Description	Pin Dia (Inches)	Usable Length (Inches)	Overall length (Inches)	Thread Length (Inches)	Thread Dia (Inches)	Weight (lbs.)
105579	P7220	0	Adjustable	5/8"	Adjustable	3-7/8"	2"	5/8" NF	0.4
106574	P7228	0	Forged, Universal	5/8"	1-7/16"	3-7/8"	1-1/8"	5/8" NF	0.4
108307	P7221	0 to 1	Adjustable	7/8"	1-3/4"	4-1/2"	1-1/8"	5/8" NF	0.6
105565	P7224	1 to 0	Adjustable	5/8"	2"	5"	2"	7/8" NF	0.6
106062	P722	1	Adjustable	7/8"	Adjustable	5"	2-1/4"	7/8" NF	1.1
105549	P728	1	Forged	7/8"	1-3/4"	5-1/2"	2-5/8"	7/8" NF	1.1
106063	P7219	1	Adjustable; extra long	7/8"	Adjustable	6-1/4"	1-5/8"	7/8" NF	1.3
106575	P7245	1	Forged; extra long	7/8"	2-1/4"	6-1/2"	3-1/2"	7/8" NF	1.3
108308	P7244	1	Forged	7/8"	2-3/4"	5-1/8"	2-1/4"	5/8" NF	0.9
108309	P7247	1	Forged	7/8"	2"	5"	1-3/8"	5/8" NF	0.9
108310	P7248	1	Forged	7/8"	1-3/4"	4-1/2"	1-1/2"	5/8" NF	0.8
108311	P7246	1 to 2	Forged	1-1/8"	2-1/4"	6-5/16"	5/8"	7/8" NF	1.5
106045	P724	1 to 2	Adjustable	1-1/8"	Adjustable	5-1/4"	2-1/4"	7/8" NF	1.4
106576	P7240	1 to 2	Forged	1-1/8"	1-13/16"	5-1/4"	2-7/16"	7/8" NF	1.5
105562	P7249	1 & 2	Forged	1-1/8" & 7/8"	2-1/16" both	8"	1-5/8"	1" NF	1.9
106064	P721	2	Adjustable	1-1/8"	Adjustable	6-1/8"	1-1/4"	1-1/8" NF	2.3
108312	P729	2	Adjustable; extra long	1-1/8"	Adjustable	7-1/2"	3-3/8"	1-1/8" NF	2.6
106046	P7212	2	Forged	1-1/8"	1-3/4"	6-1/8"	4-1/2"	1-1/8" NF	2.3
108313	P726	2 to 1	Forged	7/8"	1-3/4"	5-3/4"	2-3/8"	1-1/8" NF	1.8
108314	P7211	2 to 3	Adjustable	1-7/16"	Adjustable	6-1/2"	2-3/8"	1-1/8" NF	2.9
106047	P7243	2 to 3	Forged	1-7/16"	1-7/8"	5-3/4"	3-3/8"	1-1/8" NF	3.0
108315	P7229	3	Forged	1-7/16"	2"	5-7/8"	1-1/2"	1-3/8" NF	3.5

Other Items May Be Available

TOPLINK PINS

Agmate



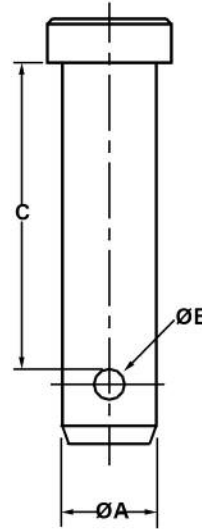
Sizes and styles for Category 0 through 3 tractors.
Clear trivalent chromate plating.

Agmate Part No.	Popular Code	Cat.	Description	Pin Dia ØA (Inches)	Usable Length B (Inches)	Overall length C (Inches)	Bulk Weight (lbs.)
106093	P776	0	Top link pin	5/8"	3"	4-7/16"	0.4
106042	P771	1	Replaces Ford 9N-560, Ferguson 195647M1	3/4"	2-3/4"	4-1/2"	0.5
		1	Top link pin	3/4"	3"	5-1/4"	
105561	P772	1	Long top link pin; replaces Ferguson 195589M1, AC339942	3/4"	3-7/8"	5-1/2"	0.6
		1	Top link pin	3/4"	4-5/8"	6-3/8"	0.8
105583	P7715	1	Extra-long top link pin; replaces Ford E381T9	3/4"	4-3/4"	6-3/8"	0.8
106581	P7716	2	Replaces Ford C5NN560A, MF185873M91, AC2090149/239888	1"	3-9/16"	5-1/4"	1.2
106582	P7719	2	Replaces Ford E27N995272	1"	3"	4-3/4"	1.1
105555	P774	2	Replaces Ford C5NN486A	1"	4-3/8"	6"	1.3
106583	P7720	2	Replaces Ford E2016F9, AC345552	1"	5-3/8"	7-1/16"	1.5
	8500182	2	Top link pin	1"	4-1/4"	6-1/8"	
106584	P7711	3	Top link pin	1-1/4"	4-5/8"	6-1/2"	2.1

Other Items May Be Available

HITCH PINS

Agmate



An economy hitch pin (clevis pin) for numerous applications.
Clear trivalent chromate plating.

Agmate Part No.	Popular Code	Pin Dia ØA (Inches)	Usable Length B (Inches)	Overall length C (Inches)	Weight (lbs.)
108316	P7100	1/2"	5"	6-3/8"	0.4
108185	P7101	5/8"	5"	6-3/8"	0.6
108317	P7102	3/4"	5"	6-3/8"	0.8
106585	P7103	7/8"	5"	6-3/8"	1.0
106586	P7104	1"	5"	6-3/8"	1.4
106587	P7105	1-1/8"	5"	6-3/8"	1.7

Other Items May Be Available

FORGED FIXED HANDLE HITCH PINS

Agmate



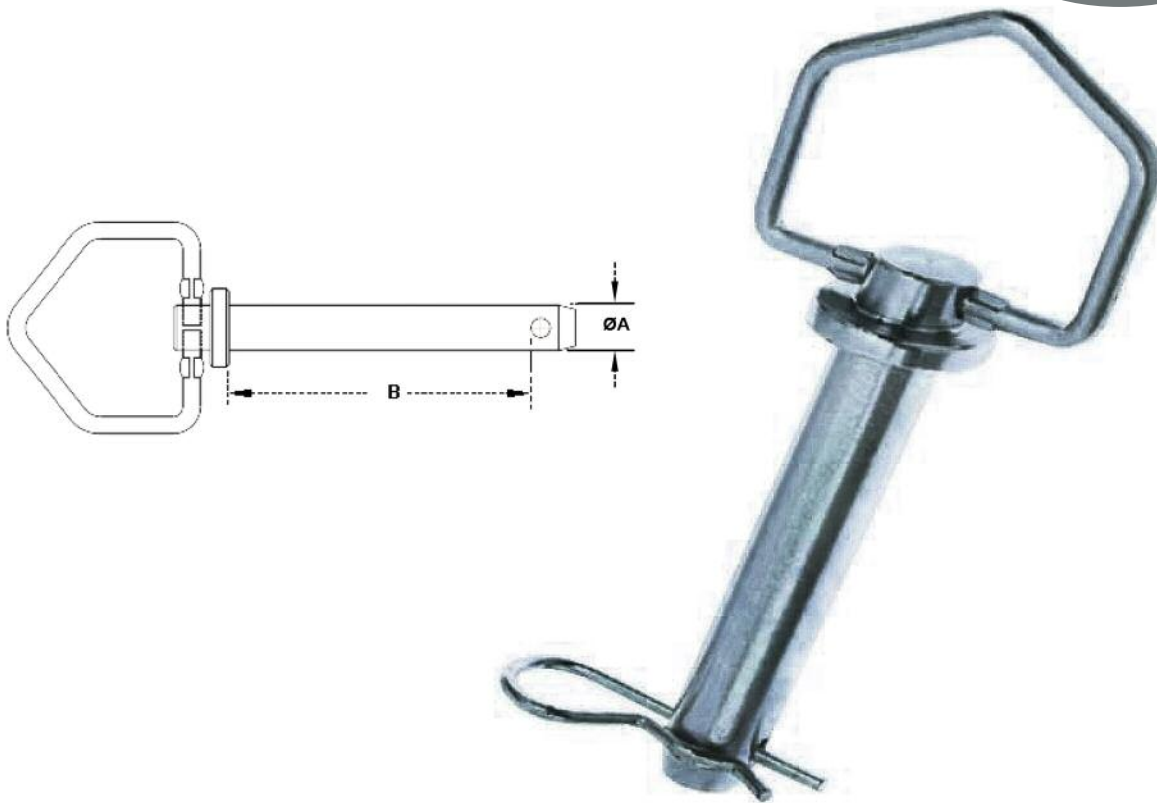
One-piece, drop-forged, Grade 5 performance hitch pins are made from high-strength steel and heat treated. Zinc plated "R" clip pin included. Clear trivalent chromate plating.

Agmate Part No.	Popular Code	Pin Dia ØA (Inches)	Usable Length B (Inches)	Overall length (Inches)	Handle	Weight (lbs.)
	P700204	7/16"	3-1/2"	5-11/32"	wire	0.3
	P700211	1/2"	3-1/2"	5-11/32"	wire	0.4
	P700321	5/8"	3-3/4"	6-15/16"	solid	0.6
	P700322	5/8"	6"	9-3/16"	solid	0.8
106592	P700331	3/4"	4"	7-7/16"	solid	0.9
	P700332	3/4"	6-1/4"	9-7/16"	solid	1.2
	P700341	7/8"	4-1/4"	7-3/4"	solid	1.2
	P700342	7/8"	6-1/2"	10-11/16"	solid	1.7
	P700351	1"	4-3/4"	8-17/32"	solid	1.6
	P700352	1"	6-3/4"	10-17/32"	solid	2.2
	P700362	1-1/8"	7"	11"	solid	2.8
	P700372	1-1/4"	7"	11-1/8"	solid	3.6
	P700382	1-3/8"	7"	11-27/32"	solid	4.6
	P700392	1-1/2"	8"	12-23/32"	solid	6.6

Other Items May Be Available

FOLDOVER HANDLE HITCH PINS (WITH CLIP)

Agmate



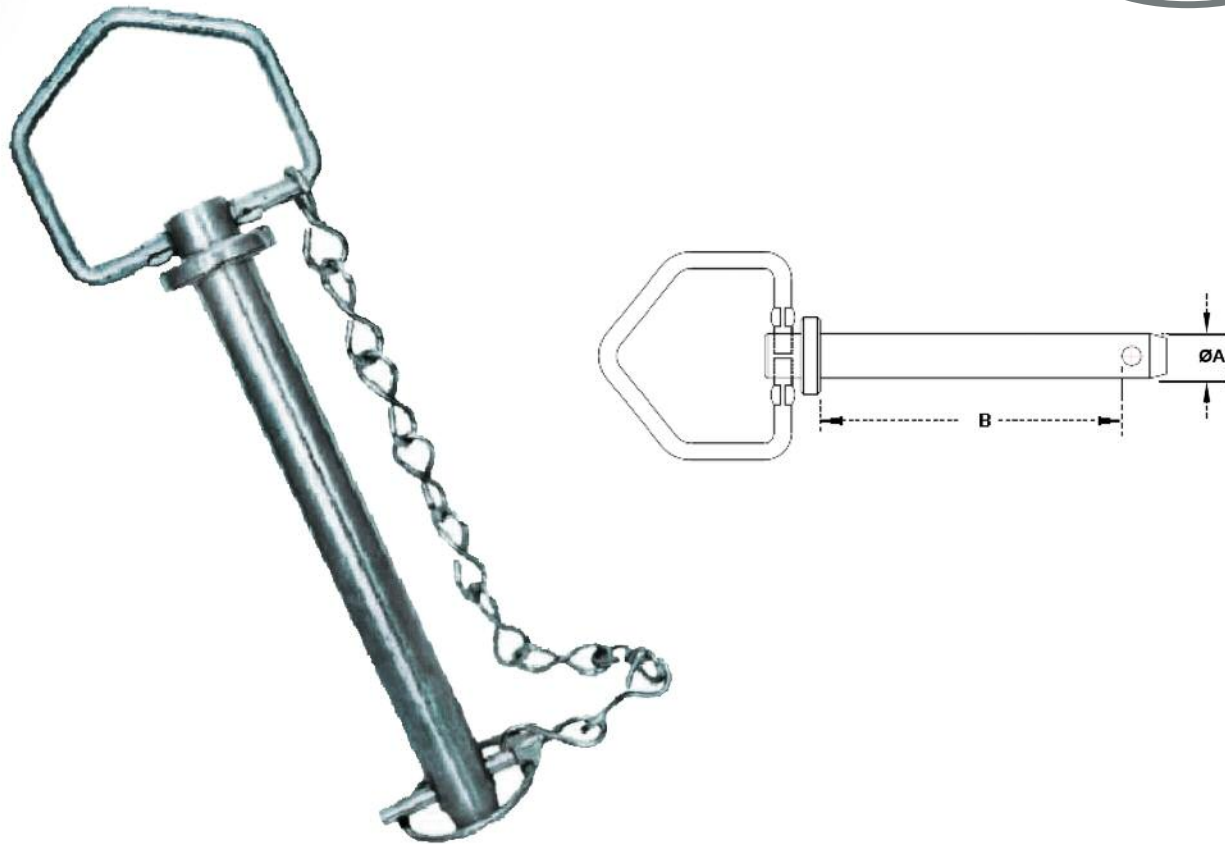
Forged-head hitch pin with foldover handle and zinc plated "R" clip pin.
More than 25% stronger than Grade 2.
Clear trivalent chromate plating.

Agmate Part No.	Popular Code	Pin Dia $\varnothing A$ (Inches)	Usable Length B (Inches)	Overall length (Inches)	Weight (lbs.)
108318	P71010C	3/8"	4-1/4"	4-3/4"	0.2
108319	P71011C	1/2"	4-1/4"	5-3/4"	0.4
108320	P71012C	1/2"	6-1/4"	7-3/4"	0.5
106078	P71021C	5/8"	4-1/4"	5-3/4"	0.6
106086	P71022C	5/8"	6-1/4"	7-3/4"	0.8
106081	P71031C	3/4"	4-1/4"	5-3/4"	0.9
106082	P71032C	3/4"	6-1/4"	7-3/4"	1.1
106083	P71041C	7/8"	4-1/4"	5-3/4"	1.2
105552	P71042C	7/8"	6-1/4"	7-3/4"	1.4
106088	P71051C	1"	4-1/4"	5-3/4"	1.5
106089	P71052C	1"	6-1/4"	7-3/4"	1.9
108321	P71062C	1-1/8"	6-1/4"	7-3/4"	2.4
106075	P71072C	1-1/4"	6-1/4"	7-3/4"	2.9

Other Items May Be Available

FOLDOVER HANDLE HITCH PINS (WITH CHAIN & LYNCH PIN)

Agmate



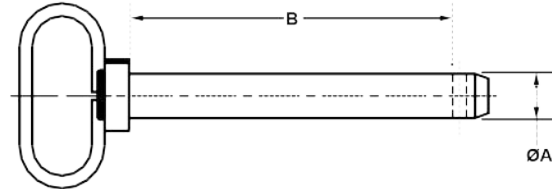
Forged head hitch pin with foldover handle and zinc plated chain and 1/4" lynch pin.
More than 25% stronger than Grade 2.
Clear trivalent chromate plating.

Agmate Part No.	Popular Code	Pin Dia ØA (Inches)	Usable Length B (Inches)	Overall length (Inches)	Weight (lbs.)
106588	P71011CL	1/2"	4-1/4"	5-3/4"	0.5
106589	P71012CL	1/2"	6-1/4"	7-3/4"	0.6
108322	P71021CL	5/8"	4-1/4"	5-3/4"	0.7
108323	P71022CL	5/8"	6-1/4"	7-3/4"	0.9
105575	P71031CL	3/4"	4-1/4"	5-3/4"	1.0
108324	P71032CL	3/4"	6-1/4"	7-3/4"	1.2
108325	P71042CL	7/8"	6-1/4"	7-3/4"	1.6
108326	P71052CL	1"	6-1/4"	7-3/4"	2.0
108327	P71062CL	1-1/8"	6-1/4"	7-3/4"	2.5
108328	P71072CL	1-1/4"	6-1/4"	7-3/4"	3.0

Other Items May Be Available

HITCH PIN (RED HANDLE PLASTIC COATED)

Agmate



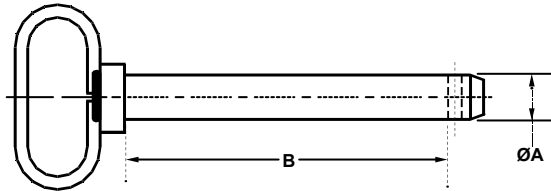
Designed for today's demanding applications, these one-piece, Grade 5 performance, forged hitch pins are made from high strength steel and heat treated. Pin has black powder coating with a red vinyl coated head and handle. Zinc plated "R" clip pin included.

Agmate Part No.	Popular Code	Pin Dia ØA (Inches)	Usable Length B (Inches)	Overall length C (Inches)	Weight (lbs.)
106330	P700511	1/2"	3-5/8"	6-5/8"	0.7
106331	P700521	5/8"	4"	7"	0.9
106332	P700522	5/8"	5-3/4"	9"	1.1
106333	P700531	3/4"	4"	7"	1.1
106334	P700532	3/4"	6-1/2"	9-1/2"	1.5
106335	P700541	7/8"	4-1/4"	7-1/4"	1.4
106336	P700542	7/8"	6-1/2"	9-1/2"	1.9
106337	P700551	1"	4-3/4"	7-3/4"	1.9
106338	P700552	1"	7-1/2"	10"	2.6
106340	P700562	1-1/8"	8-1/2"	11-1/2"	3.3
106342	P700572	1-1/4"	8-1/2"	11-1/2"	4.1
106344	P700582	1-1/2"	8-1/2"	11-1/2"	5.0
106346	P700590	1-3/4"	8-1/2"	12"	5.5
106347	P700595	2"	8-1/2"	12"	5.9
106339	-	1"	12"	15"	3.5
106343	-	1-1/4"	12"	15"	6.6
	-	1-1/2"	13"	16"	7.7

Other Items May Be Available

HITCH PIN (BLUE HANDLE PLASTIC COATED)

Agmate



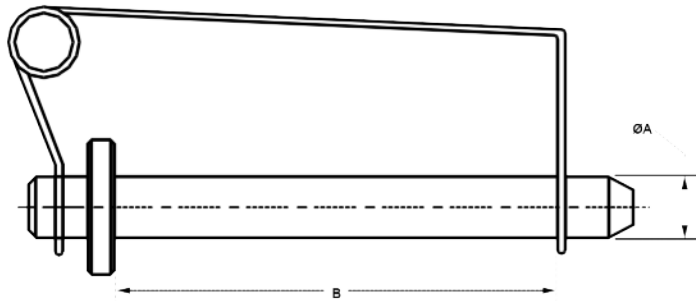
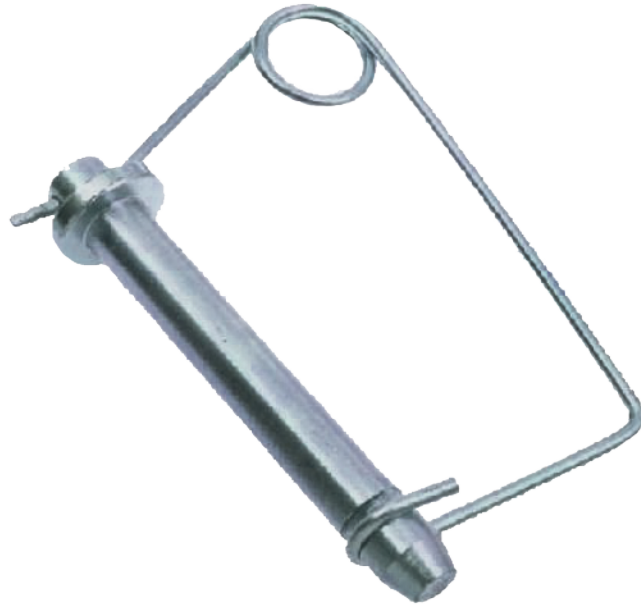
Our premium, heat treated, grade 8 performance hitch pin made from alloy steel is designed for the toughest applications. Pin has black powder coating with a blue/gray vinyl coated head and handle. Zinc plated "R" clip pin included.

Agmate Part No.	Popular Code	Pin Dia ØA (Inches)	Usable Length B (Inches)	Overall length (Inches)	Weight (lbs.)
108329	P700811	1/2"	3-5/8"	6-5/8"	0.7
108330	P700821	5/8"	4"	7"	0.9
108331	P700822	5/8"	6"	9"	1.0
108332	P700831	3/4"	4"	7"	1.2
108333	P700832	3/4"	6-1/2"	9-1/2"	1.2
108334	P700841	7/8"	4-1/4"	7-1/4"	1.4
108335	P700842	7/8"	6-1/2"	9-1/2"	1.9
108336	P700851	1"	4-3/4"	7-3/4"	1.9
108337	P700852	1"	7"	10"	2.4
108338	P700862	1-1/8"	7"	10"	3.0
108339	P700872	1-1/4"	7"	10"	3.0
108340	P700882	1-1/2"	8-1/2"	11-1/2"	5.8

Other Items May Be Available

SAFETY LOCK / HITCH PINS

Agmate



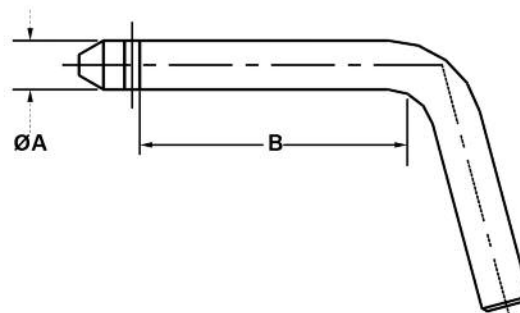
Spring steel wire fits in the groove on the pin to secure it.
Clear trivalent chromate plating.

Agmate Part No.	Popular Code	Pin Dia ØA (Inches)	Usable Length B (Inches)	Overall length (Inches)	Weight (lbs.)
106590	P71011SP	1/2"	4"	5-1/2"	0.5
108341	P71021SP	5/8"	4"	5-1/2"	0.7
106591	P71031SP	3/4"	4"	5-1/2"	1.0
108342	P71032SP	3/4"	6"	7-1/2"	1.2
108343	P71042SP	7/8"	6"	7-1/2"	1.5
108344	P71052SP	1 "	6"	7-1/2"	1.9

Other Items May Be Available

BENT HITCH PINS

Agmate®



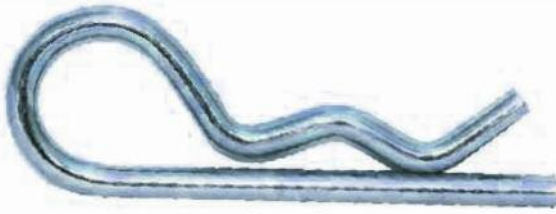
These pins have numerous farm, lawn and garden, and industrial applications.
Complete with zinc plated "R" clip pin.
Clear trivalent chromate plating.

Agmate Part No.	Popular Code	Pin Dia $\varnothing A$ (Inches)	Usable Length B (Inches)	Weight (lbs.)
106613	P71118	3/8"	3"	0.18
106614	P71120	1/2"	2-1/2"	0.30
106126	P71111	1/2"	3"	0.34
108345	P71122	1/2"	4"	0.40
106615	P71123	1/2"	5"	0.46
106125	P71112	5/8"	3"	0.50
106617	P71126	5/8"	4"	0.64
106618	P71127	5/8"	5"	0.76
105577	P71129	3/4"	4-1/2"	1.02
	P71114	5/16"	2-1/2"	0.10
	P71115	5/16"	3"	0.12
	P71117	3/8"	2-1/2"	0.14
106619	P71113	3/4"	3-1/2"	0.80
106620	P71130	3/4"	5"	1.06

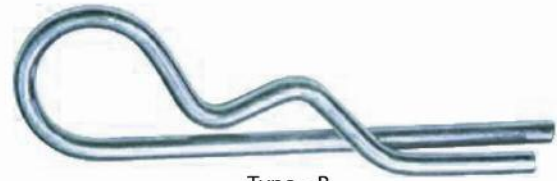
Other Items May Be Available

"R" CLIP PINS & TWISTED PINS

Agmate



Type - A

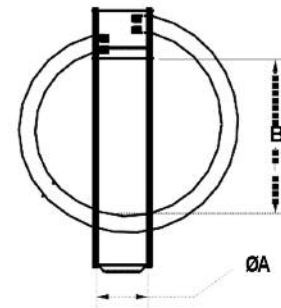


Type - B

Available in the most popular sizes for farm and other applications.
Clear trivalent chromate plating.

Agmate Part No.	Popular Code	Type	Wire Dia (Inches)	Overall length (Inches)	Fits Pin Dia (Inches)	Retail Bag Part Number	Retail Bag Ref. Number	Weight (lbs.)
108315	P7922	A	1/16"	1-9/16"	3/8" to 1/2"	-	-	0.01
106608	P7923	A	3/32"	1-5/8"	1/4" to 1/2"	87299400(12)	B500406	0.01
106595	P7924	A	1/8"	1-15/16"	1/2" to 3/4"	87299401(8)	B500407	0.02
108347	P7925	A	5/32"	2-15/16"	5/8" to 1"	87299402(7)	B500408	0.04
106596	P7927	A	3/16"	3-3/4"	7/8" to 1-1/4"	87299403(3)	B500409	0.08
108348	P7928	A	1/4"	4"	3/4" to 1"	87299404(2)	B500410	0.10
108349	P7929	A	5/16"	5-15/16"	1" to 1-7/16"	-	-	0.30
	P7956	A	5/16"	4-1/8"	1" to 1-7/16"	87299405(2)	B500411	0.20
	P7995	B	1/8"	2-1/2"	1/2" to 7/8"	-	-	0.02
	P7996	B	5/32"	3-1/32"	5/8" to 1"	-	-	0.04
	P7997	B	3/16"	4-3/32"	3/4" to 1-1/4"	-	-	0.06
	P793	A	5/16"	3-1/2"	5/16"	-	-	0.08

LYNCH PINS



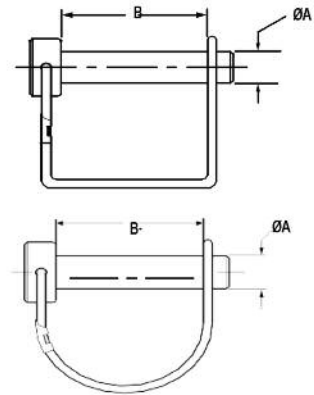
Fasteners for numerous farm and other applications.

Clear trivalent chromate plating except for 87299416 and 87299418, which have a black powder coated finish.

Agmate Part No.	Popular Code	Description	Pin Dia ØA (Inches)	Usable length B (Inches)	Retail Bag Part Number	Retail Bag Ref. Number	Weight (lbs.)
105574	P7919	Standard	3/16"	1"	87299423 (2)	B500413	0.03
106597	P7920	87299408 (SPC7919DS, B500168) with chain and cotter pin	3/16"	1"		-	0.03
105570	P791	Standard	7/16"	1-1/4"	87299411 (2)	-	0.10
	P792	87299410 (2N609DS, B500170) with chain and cotter pin	7/16"	1-1/4"		-	0.20
105569	P794	Standard	1/4"	1-1/4"	87299424 (2)	B500412	0.07
108350	P795	Short shank	7/16"	1-1/4"		-	0.09
105571	P7913	Heavy duty; fits Category 1, 2 and 3 pins; black powder coat	7/16"	1-1/2"	87299414 (2)	-	0.13
108351	P7914	87299416 (251387DS, B500171) with chain and cotter pin; black powder coat	7/16"	1-1/2"		-	0.18
105572	P7915	Standard	5/16"	1-1/4"	87299417 (2)	-	0.10
108352	P7916	Standard	3/8"	1-1/4"		-	0.10
108353	P798	Long; fits Category 1, 2 and 3 pins	7/16"	1-3/4"		-	0.14
108354	P798E	Longshank	7/16"	1-1/4"		-	0.12

Other Items May Be Available

LOCKING PINS (PTO PIN) & PTO ACCESSORIES



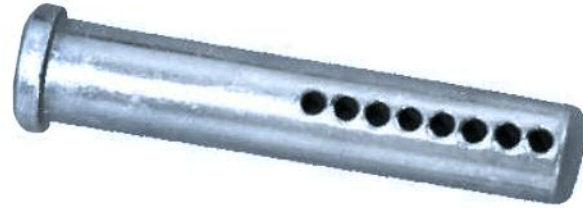
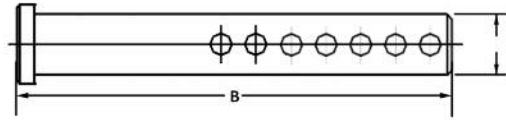
Numerous farm, lawn and garden, and industrial applications.
 Round- and square-loop styles.
 Clear trivalent chromate plating.

Agmate Part No.	Popular Code	Pin Dia ØA (Inches)	Usable Length B (Inches)	Wire Loop	Bulk Weight (lbs.)
105581	P7950	1/4"	1-3/8"	Round	0.06
108355	P7938	1/4"	1-3/4"	Round	0.06
105560	P7952	1/4"	2-1/4"	Square	0.08
108356	P7953	1/4"	2-1/2"	Square	0.08
106601	P7951	1/4"	2-1/2"	Round	0.08
108357	P7954	5/16"	1-3/8"	Round	0.08
	P7955	5/16"	1-3/4"	Round	0.08
105558	P7939	5/16"	2-1/4"	Square	0.10
105559	P7940	5/16"	2-1/4"	Round	0.10
108358	P7956	5/16"	2-1/2"	Round	0.10
106602	P7957	5/16"	2-1/2"	Square	0.10
106603	P7958	5/16"	3-1/2"	Square	0.14
108360	P7959	5/16"	3-15/16"	Square	0.14
108361	P7960	3/8"	1-1/2"	Round	0.11
106600	P7941	3/8"	2-1/4"	Round	0.14
106604	P7964	3/8"	2-1/4"	Square	0.14
108362	P7963	3/8"	2-1/2"	Round	0.14
108363	P7965	3/8"	2-1/2"	Square	0.16
106605	P7966	3/8"	3"	Square	0.16
106606	P7967	3/8"	3-7/16"	Square	0.18
	Sp16619	Yoke pin assembly; fits most American PTO yokes			0.10
	Sp16625	Yoke pin assembly for 1-3/8" X 6 spline or spline adaptor, welded yoke only			0.10
	Sp16626	Yoke pin assembly for 1-3/8" X 21 spline or spline adaptor, welded yoke only			0.20
	17321	Roll pin for over-running clutches; 5 per bag			0.10

Other Items May Be Available

UNIVERSAL CLEVIS PINS

Agmate

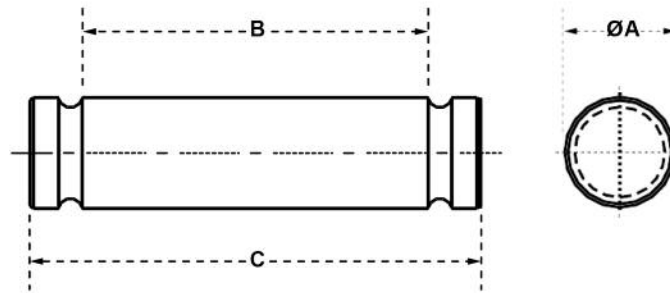
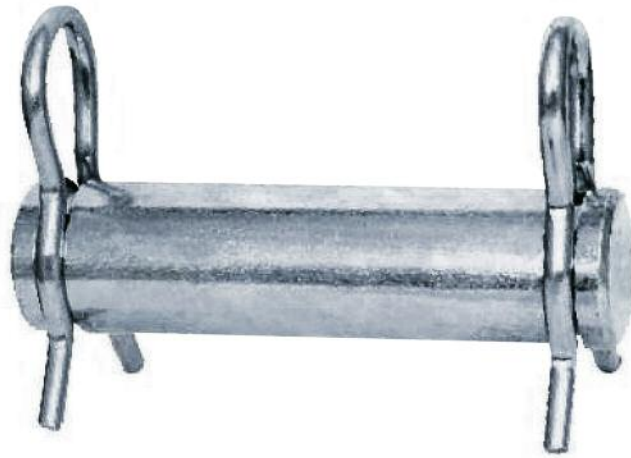


Can be used as an adjustable replacement pin.
Multiple holes allow user to cut off excess length.
Clear trivalent chromate plating.

Agmate Part No.	Popular Code	Pin Dia ØA (Inches)	Overall Length B (Inches)	Weight (lbs.)
108364	P7411	1/4"	2"	0.02
108365	P7412	5/16"	2"	0.04
108366	P7413	3/8"	2"	0.05
106593	P7414	7/16"	2"	0.08
108367	P7415	1/2"	2"	0.11
108368	P7416	1/2"	2-1/2"	0.14
108369	P7417	7/16"	2-1/2"	0.13
108370	P7418	7/16"	3"	0.14
106594	P7419	1/2"	3"	0.15
108371	P7420	5/8"	3"	0.16
108372	P7421	3/4"	3"	0.16

HYDRAULIC CYLINDER PINS

Agmate



Pins for hydraulic cylinders and jacks in popular sizes.
 Standard cylinder clips included.
 Will accommodate "R" clip pin.
 Clear trivalent chromate plating.

Agmate Part No.	Popular Code	Pin Dia ØA (Inches)	Usable Length B (Inches)	Overall length C (Inches)	Bulk Weight (lbs.)
106598	P7712	1"	2"	2-3/4"	0.6
108373	P7736	1"	2-1/8"	2-15/16"	0.5
	P7738	1"	2-1/4"	3-1/16"	0.6
106111	P7729	1"	2-3/4"	3-9/16"	0.8
106076	P7743	1"	2-7/8"	3-11/16"	0.8
108374	P7744	1"	3"	3-13/16"	0.9
108375	P7713	1"	3-1/8"	3-15/16"	0.9
108376	P7746	1"	3-1/4"	4-1/16"	0.9
108377	P7731	1-1/8"	1-15/16"	2-3/8"	0.8
108378	P7750	1-1/4"	3-1/4"	4-1/16"	1.4

Other Items May Be Available

RATCHET JACKS

Agmate



Implement jacks have multiple uses including the adjustment of implements and equipment. Replace hydraulic cylinders or old screw jacks in those applications where infrequent adjustment is needed.

Agmate Part No.	Popular Code	Description	Weight (lbs.)
102949	SL1541	Heavy-duty ratchet jack with 1-1/4" ACME threads and grease zerks; adjustable from 20" closed to 28" open; 1" clevis pins, clip pins and handle included; black powder-coat finish w/locknut	15
108379	SL1541GT	Heavy-duty ratchet jack with 1-1/4" ACME threads and grease zerks; adjustable from 20" closed to 28" open; 1" clevis pins, clip pins and handle included; primered finish	15
106054		Medium duty ratchet jack; adjustable from 20" closed to 28" open; includes 4" clevis pins and handle	

TURNBUCKLE IMPLEMENT JACK

Implement jacks have multiple uses including the **adjustment of implements and equipment.**

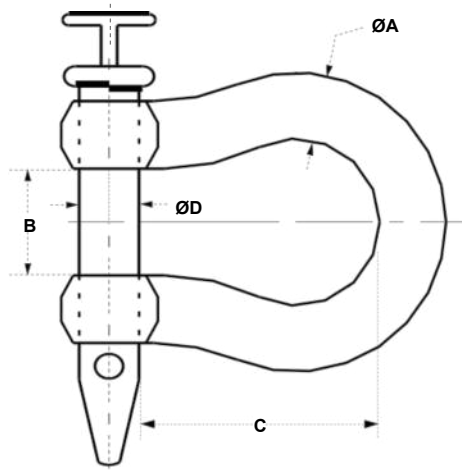


Agmate Part No.	Popular Code	Description	Color	Weight (lbs.)
108380	SL153	Turnbuckle implement jack with 1-1/4" NC threads; adjustable from 20" closed to 28" open; 1" pin holes	Red	11.10
106561	SL1548	Handle for Ratchet Jacks	Plated	0.70
106560		1" diameter clevis pin w/2 clips for ratchet jacks		
106607	P7910	Clip pin for 1" diameter hydraulic cylinder pins	Plated	0.02

Other Items May Be Available

STRAIGHT CLEVISES

Agmate



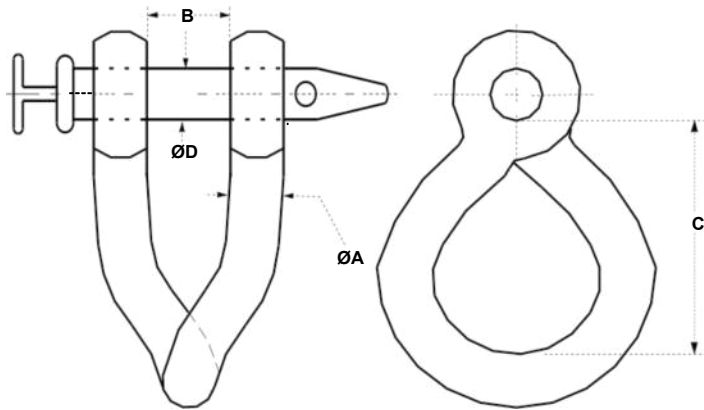
Do not exceed working load limit.
Farm hardware is not for lifting.

Agmate Part No.	Popular Code	Body Dia ØA (Inches)	Clevis Opening B (Inches)	Usable Length C (Inches)	Pin Dia ØD (Inches)	Working Load Limit (lbs.)	Weight (lbs.)
108381	CL490103	5/8"	7/8"	3-1/4"	1/2"	6,000	1.50
106116	CL490104	3/4"	1-5/16"	3-3/4"	5/8"	12,000	2.50
108382	CL490105	7/8"	1-5/16"	3-1/4"	3/4"	16,000	3.00
106118	CL490106	7/8"	1-5/16"	4-1/4"	3/4"	16,000	3.60
108383	CL490107	15/16"	1-7/16"	4-5/8"	7/8"	20,000	4.30
106115	CL490108	1"	2-1/8"	5-5/16"	1"	25,000	5.80

Other Items May Be Available

TWISTED CLEVISES

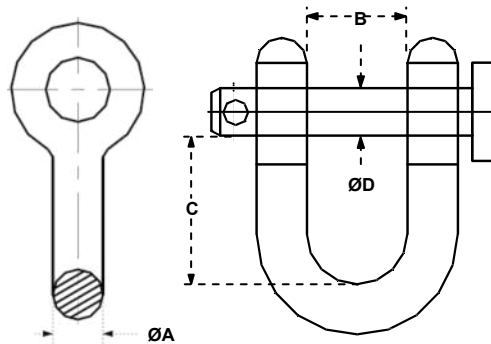
Agmate



Do not exceed working load limit.
Farm hardware is not for lifting.

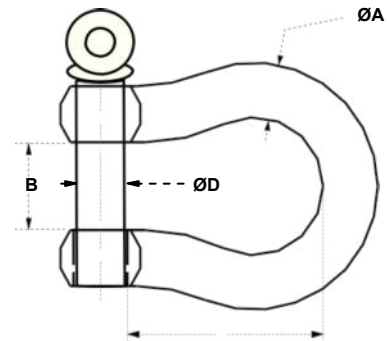
Agmate Part No.	Popular Code	Body Dia ØA (Inches)	Clevis Opening B (Inches)	Usable Length C (Inches)	Pin Dia ØD (Inches)	Working Load Limit (lbs.)	Weight (lbs.)
108384	CL490203	5/8"	7/8"	3"	1/2"	6,000	1.50
106114	CL490204	3/4"	1-5/16"	3-1/2"	5/8"	12,000	.50
108385	CL490205	7/8"	1-5/16"	3"	3/4"	16,000	3.00
106119	CL490206	7/8"	1-5/16"	3-7/8"	3/4"	16,000	3.60
108386	CL490207	15/16"	1-7/16"	4-1/4"	7/8"	20,000	4.30
108387	CL490208	1"	2-1/8"	5"	1"	25,000	5.80

Other Items May Be Available



Do not exceed working load limit.
Farm hardware is not for lifting.

Agmate Part No.	Popular Code	Body Dia ØA (Inches)	Clevis Opening B (Inches)	Usable Length C (Inches)	Pin Dia ØD (Inches)	Working Load Limit (lbs.)	Weight (lbs.)
108388	CL490301	1/4"	15/32"	7/8"	5/16"	1,000	0.10
108389	CL490302	5/16"	17/32"	1"	3/8"	1,500	0.20
108390	CL490303	3/8"	21/32"	1-1/4"	7/16"	2,000	0.30
106027	CL490304	7/16"	23/32"	1-1/2"	1/2"	3,000	0.40
106028	CL490305	1/2"	13/16"	1-11/16"	5/8"	6,000	0.60
108391	CL490306	5/8"	1-1/16"	2"	3/4"	9,000	1.20



Screw pin shackle type used for multiple hitches and crawler tractors.

Do not exceed working load limit.

Farm hardware is not for lifting.

Agmate Part No.	Popular Code	Body Dia ØA (Inches)	Clevis Opening B (Inches)	Usable Length C (Inches)	Pin Dia ØD (Inches)	Working Load Limit (lbs.)	Weight (lbs.)
105578	CL490401	1/4"	15/32"	1-1/8"	5/16"	1,000	0.10
108392	CL490402	5/16"	17/32"	1-1/4"	3/8"	2,000	0.20
108393	CL490403	3/8"	23/32"	1-7/16"	7/16"	3,000	0.30
108394	CL490404	7/16"	3/4"	1-11/16"	1/2"	4,000	0.50
106117	CL490405	1/2"	13/16"	1-15/16"	5/8"	6,500	0.70
108395	CL490406	5/8"	1-1/16"	2-1/2"	3/4"	9,000	1.50
108396	CL490407	3/4"	1-1/4"	3"	7/8"	13,000	2.20
108397	CL490408	7/8"	1-7/16"	3-1/4"	1"	15,000	3.50
108398	CL490409	1"	1-11/16"	3-3/4"	1-1/8"	17,000	5.20
108399	CL490410	1-1/8"	1-13/16"	4-1/4"	1-1/4"	24,000	7.00
108400	CL490411	1-1/4"	2"	4-1/2"	1-3/8"	28,000	9.50

GENERAL PURPOSE CLEVISES

Agmate



Do not exceed working load limit.
Farm hardware is not for lifting.

Agmate Part	Popular Code	Body Dia ØA (Inches)	Opening B (Inches)	Usable Length C (Inches)	Pin Dia ØD (Inches)	Working Load Limit (lbs.)	Weight (lbs.)
108401	CL490312	3/4"	2-1/2"	6-3/16"	3/4"	9,000	3.30

TRACTOR DRAWBAR GRAB HOOK



Do not exceed working load limit.
Farm hardware is not for lifting.

Agmate Part No.	Popular Code	Description A (Inches)	Working Load Limit (lbs.)	Weight (lbs.)
106077	CL490516	For all tractor drawbars up to 1-5/8" thick; for use with 5/16" to 1/2" chain	9,000	3.10

Other Items May Be Available



Designed to control the stroke on air or hydraulic cylinders.
 Unique "Finger Tab" design on aluminum and steel models for easier installation and removal.
 Clamshell package.

Agmate Part No.	Popular Code	Description	Segments	Weight (lbs.)
107052	HC391050	Fits 1-3/8" & 1-1/2" diameter shafts; aluminum; no finger tabs	3/4", 1", 1-1/4", 1-1/2"	1.0
107053	HC391060	Fits 1-1/8" & 1-1/4" diameter shafts; aluminum; no finger tabs	3/4", 1", 1-1/4", 1-1/2"	1.0
107050	HC391030	Fits 1-1/8", 1-1/4", 1-3/8" & 1-1/2" diameter shafts; aluminum; finger tabs	3/4", 1", 1-1/4", 1-1/2"	2.0
107051	HC39104	Fits 1-3/4" & 1-7/8" & 2" diameter shafts; aluminum; finger tabs	1", 1-1/2", 2", 4"	4.0
107049	HC391020	Fits 7/8" & 1-1/16" diameter shafts; aluminum; finger tabs	3/4", 1", 1-1/4", 1-1/2"	2.0

Agmate®



Dick Jones & Assoc., Inc.
PO Box 3835
Cleveland, TN 37320-3835
PHONE: 423-478-2253
FAX: 423-478-2283
sales@djonesa.com